

# STELLA

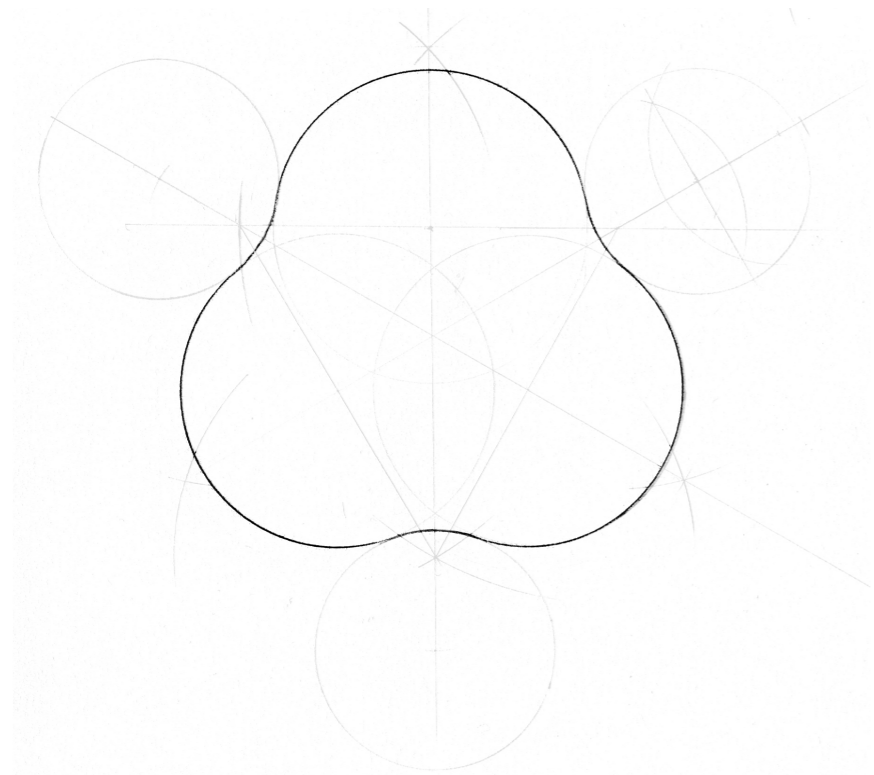
DESIGNED BY  
*KUTARQ*



Stella is the new table collection by KUTARQ for Kendo. Leading KUTARQ studio, architect and designer Jordi López Aguiló designs lighting, objects and furniture with a unique and pragmatic perspective. Each project involves a methodical process that emphasizes both material and research. With the constant challenge of revealing the “soul” behind his objects, he offers their users not just an aesthetic piece but rather a design with personality and a life of its own.



# DISCOVERING STELLA



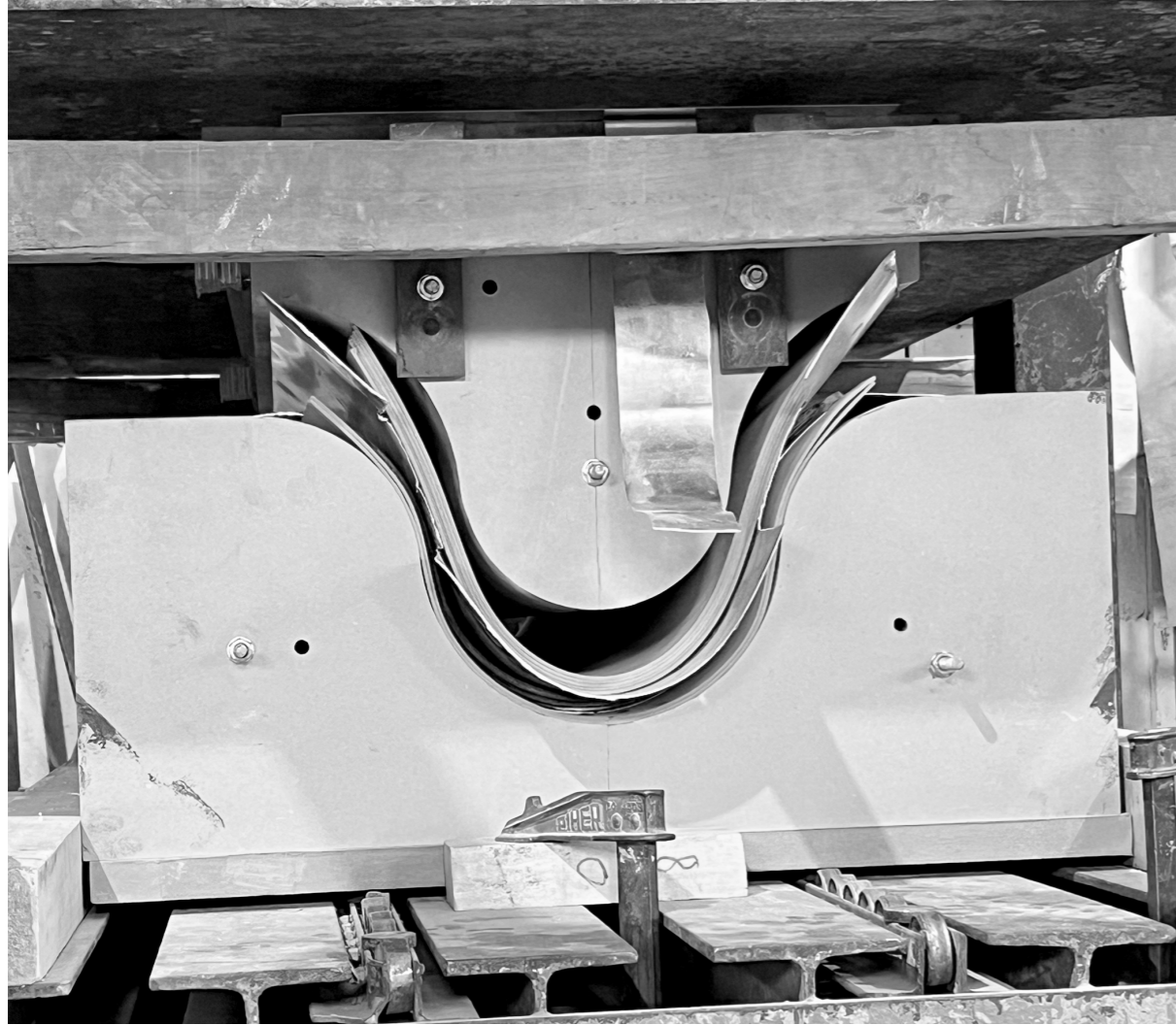
*A base of soft, sinuous shapes that recall nature is Stella table's trademark. From its combination with a circular tabletop, this singular collection of tables is generated.*





## HINTS OF MODERN *ARCHITECTURE*

Stella's design is inspired by the sinuous shapes of Lake Point residential tower, in Chicago. This influence is perceivable at the table's base, a robust and totemic piece shaped like a rounded star. The base is completed with a circular top to fulfill the function of a coffee table, achieving geometric balance between the organicity of the support and the purity of the circle.



## CRAFTED WITH CARE

Stella table has a complex manufacturing process. The base's singular shape is obtained by bending a wooden board. Later on, the table top in the corresponding material is incorporated to the base. All this processes are performed in an artisanal way, taking care of every detail in order to offer our clients a well-finished piece of furniture of the highest quality.



# VARIED PERSONALITY

*One of Stella's distinct characteristics is its wide range of finishes for the base as well as the tabletop. Many possibilities at hand to explore this table's full potential and make it suitable to any in-*



The base is available in lacquer, oak, or ash wood, whereas the tabletop is offered in lacquer, oak, ash, smoked grey glass, and white, black or travertine marble. There exist eleven colours of lacquer at hand, five colours of oak, and six colours of ash. Thanks to the wide range of finishes, Stella can morph into the aesthetic preference of the user, going from clean, elegant looks to colourful and fun proposals. 120 cm diameter table is offered exclusively with a glass tabletop.





On this page, Stella table in measurements Ø100x38cm and grey ash finish.

On this page, Stella Ø70x38cm with a travertine marble top and blue ash base. On the right page, Stella Ø100x38cm





On this page, Stella Ø100x38cm with a smoked grey glass top and MDF base lacquered in graphite. On the right, Stella Ø100x38cm with a white marble top and MDF base lacquered in stone.





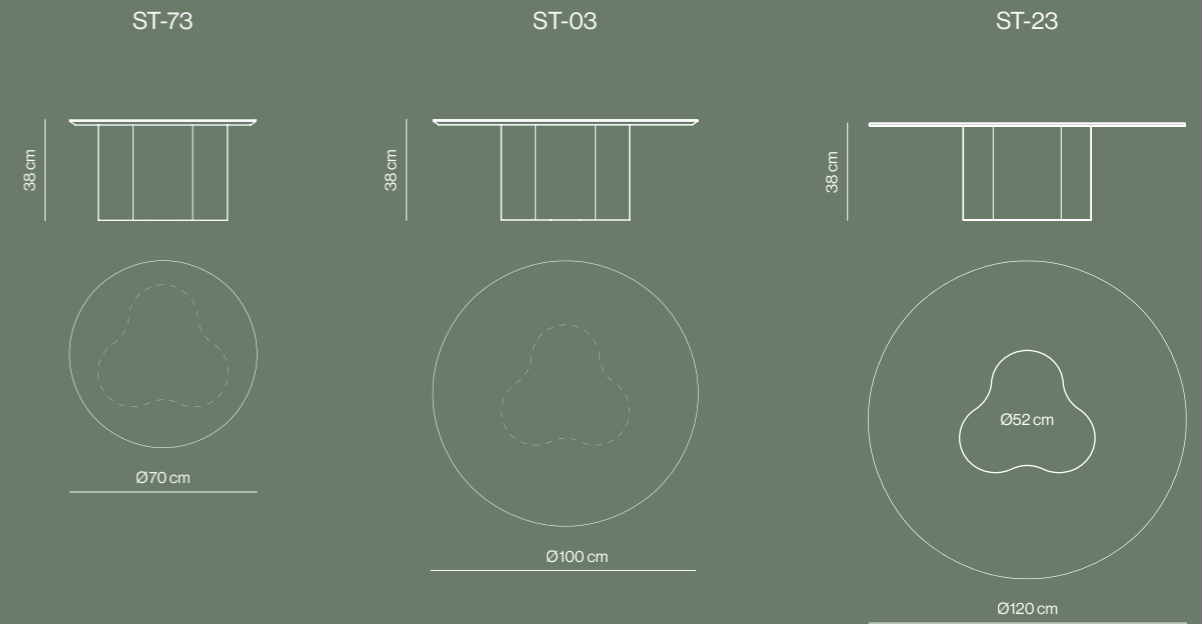
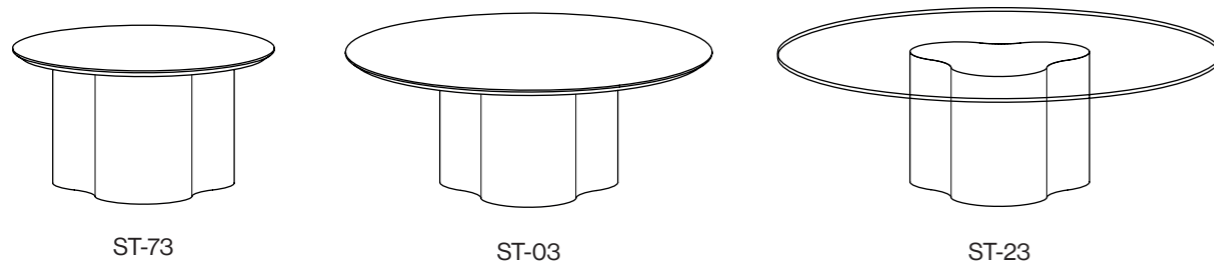
# MEET THE *FAMILY*

---



Left to right: Stella Ø70x38cm grey ash, Stella Ø100x38cm smoked grey top / fir lacquered base, Stella Ø100x38cm white marble top / stone lacquered base, Stella Ø70x38cm travertine marble top / blue ash base, Stella Ø100x38cm natural oak.

# STELLA IN A NUTSHELL



Stella collection comprises two sizes of tables, composed of the organic-shaped base and a rounded top. The base is offered finished in lacquer, oak or ash wood. It can be combined with a lacquer, oak, ash, marble, or glass top.

Laca piedra Stone lacquer RAL 7044	Laca arena Sand lacquer NCSS2005-Y20R	Laca visón Taupe lacquer NCSS4005-Y20R	Laca grafito Graphite lacquer RAL 7022	Laca pizarra Slate lacquer NCSS8500-N	Laca negro Black lacquer	Laca niebla Fog lacquer NCSS5005-B20G
Laca océano Ocean lacquer NCSS7010-B10G	Laca blanco White lacquer	Laca caldera Russet lacquer NCSS4050-Y70R	Laca abeto Fir lacquer NCSS7010-G10Y	Roble natural Natural oak	Roble claro Light oak	Roble ceniza Ash oak
Roble tostado Toasted oak	Roble negro Black oak	Fresno natural Natural ash	Fresno ceniza Grey ash	Fresno tostado Toasted ash	Fresno negro Black ash	Fresno verde Green ash
Fresno azul Blue ash	Mármol blanco White marble	Mármol negro Black marble	Mármol travertino Travertine marble	Cristal fumé gris Smoked grey glass		