

## Escalas

Manufacturer: Inclass, Spain



Product Code	Base	Description	Price	G2/COM	G3	G4	G5	G6	G7	G10
--------------	------	-------------	-------	--------	----	----	----	----	----	-----

Modular seating with seats, backrests, privacy screens and table tops over aluminum platforms of different sizes



Upholstered modular seat with back 80cm for sofa.

COM: 220 cm - 2.5 yds

ESC0200TA	Central		\$1,896	\$2,034	\$2,145	\$2,475	\$2,751	\$3,030	\$3,318
ESC0205TA	Right end		\$1,896	\$2,034	\$2,145	\$2,475	\$2,751	\$3,030	\$2,778
ESC0207TA	Left end		\$1,896	\$2,034	\$2,145	\$2,475	\$2,751	\$3,030	\$2,778
ESC0209TA	Single		\$1,896	\$2,034	\$2,145	\$2,475	\$2,751	\$3,030	\$2,778



Upholstered modular seat with back 80cm and arm for sofa.

COM: 260 cm - 2.9 yds

ESC0265TA	Right end		\$2,697	\$2,943	\$3,135	\$3,720	\$4,206	\$4,695	\$4,245
ESC0267TA	Left end		\$2,697	\$2,943	\$3,135	\$3,720	\$4,206	\$4,695	\$4,245

## Escalas

Manufacturer: Inclass, Spain

Product Code	Base	Description	Price	G2/COM	G3	G4	G5	G6	G7	G10
--------------	------	-------------	-------	--------	----	----	----	----	----	-----



Upholstered modular seat with corner backrest 80cm for sofa.

COM: 240 cm - 2.7 yds

ESC0215TA	Right end			\$2,466	\$2,652	\$2,799	\$3,246	\$3,618	\$3,987	\$3,642
ESC0217TA	Left end			\$2,466	\$2,652	\$2,799	\$3,246	\$3,618	\$3,987	\$3,642
ESC0219TA	Single			\$2,466	\$2,652	\$2,799	\$3,246	\$3,618	\$3,987	\$3,642



Upholstered modular seat with high backrest 80cm for sofa.

COM: 240 cm - 2.7 yds

ESC0250TA	Central			\$2,250	\$2,397	\$2,514	\$2,862	\$3,156	\$3,447	\$3,177
ESC0255TA	Right end			\$2,250	\$2,397	\$2,514	\$2,862	\$3,156	\$3,447	\$3,177
ESC0257TA	Left end			\$2,250	\$2,397	\$2,514	\$2,862	\$3,156	\$3,447	\$3,177
ESC0259TA	Single			\$2,250	\$2,397	\$2,514	\$2,862	\$3,156	\$3,447	\$3,177



Upholstered modular seat 80cm for sofa.

COM: 150 cm - 1.65 yds

ESC0220TA	Central			\$1,320	\$1,410	\$1,485	\$1,704	\$1,887	\$2,073	\$1,908
ESC0225TA	Right end			\$1,320	\$1,410	\$1,485	\$1,704	\$1,887	\$2,673	\$1,908
ESC0227TA	Left end			\$1,320	\$1,410	\$1,485	\$1,704	\$1,887	\$2,073	\$1,908
ESC0229TA	Single			\$1,320	\$1,410	\$1,485	\$1,704	\$1,887	\$2,073	\$1,908



Upholstered modular seat 40cm for sofa.

COM: 95 cm - 1.1 yds

ESC0230TA	Central			\$825	\$891	\$942	\$1,098	\$1,227	\$1,356	\$1,242
-----------	---------	--	--	-------	-------	-------	---------	---------	---------	---------

## Escalas

Manufacturer: Inclass, Spain

Product Code	Base	Description	Price	G2/COM	G3	G4	G5	G6	G7	G10
--------------	------	-------------	-------	--------	----	----	----	----	----	-----



Upholstered modular seat 40cm for sofa.

COM: 95 cm - 1.1 yds

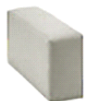
ESC0235TA	Right end			\$825	\$891	\$942	\$1,098	\$1,227	\$1,356	\$1,242
ESC0237TA	Left end			\$825	\$891	\$942	\$1,098	\$1,227	\$1,356	\$1,242



High upholstered arm W.20cm for right or left side of modular sofas.

COM: 150 cm - 1.65 yds

ESC0315TA	Right end			\$855	\$945	\$1,020	\$1,239	\$1,422	\$1,605	\$1,431
ESC0317TA	Left end			\$855	\$945	\$1,020	\$1,239	\$1,422	\$1,605	\$1,431



Low upholstered arm W.20cm for right or left side of modular sofas.

COM: 95 cm - 1.1 yds

ESC0325TA	Right end			\$774	\$852	\$915	\$1,101	\$1,257	\$1,416	\$1,269
ESC0327TA	Left end			\$774	\$852	\$915	\$1,101	\$1,257	\$1,416	\$1,269



Storage arm with wooden top lid in painted MDF - 40cm. Central, right or left positions of the sofa frames

COM: 170 cm - 1.9 yds

ESC0430LC	Central			\$1,656	\$1,758	\$1,839	\$2,082	\$2,283	\$2,487	\$2,391
ESC0435LC	Right end			\$1,656	\$1,758	\$1,839	\$2,082	\$2,283	\$2,487	\$2,391
ESC0435LC	Left end			\$1,656	\$1,758	\$1,839	\$2,082	\$2,373	\$2,787	\$2,391

## Escalas

Manufacturer: Inclass, Spain

Product Code	Base	Description	Price	G2/COM	G3	G4	G5	G6	G7	G10
--------------	------	-------------	-------	--------	----	----	----	----	----	-----



Storage arm with wooden top lid in walnut veneer - 40cm.

COM: 170 cm - 1.9 yds

ESC0430NG	Central		\$1,896	\$1,998	\$2,079	\$2,322	\$2,523	\$2,727	\$2,631
ESC0435NG	Right end		\$1,896	\$1,998	\$2,079	\$2,322	\$2,523	\$2,727	\$2,631
ESC0437NG	Left end		\$1,896	\$1,998	\$2,079	\$2,322	\$2,523	\$2,727	\$2,631



Storage arm with wooden top lid in oak veneer - 40cm.

COM: 170 cm - 1.9 yds

ESC0430RO	Central		\$1,755	\$1,857	\$1,938	\$2,181	\$2,382	\$2,586	\$2,490
ESC0435RO	Right end		\$1,755	\$1,857	\$1,938	\$2,181	\$2,382	\$2,586	\$2,490
ESC0437RO	Left end		\$1,755	\$1,857	\$1,938	\$2,181	\$2,382	\$2,586	\$2,490



Wooden top W.40cm for modular sofas. To be placed at central, right or left positions of the sofa frames

ESC0420MA	Central		\$681	\$708	\$669	\$720	-	-	-
ESC0425MA	Right end		\$681	\$708	\$669	\$720	-	-	-
ESC0427MA	Left end		\$681	\$708	\$669	\$720	-	-	-



Wooden top W.80cm for modular sofas.

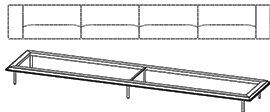
ESC0410MA	Central		\$1,020	\$1,056	\$1,008	\$1,068	-	-	-
ESC0415MA	Right end		\$1,020	\$1,056	\$1,008	\$1,068	-	-	-
ESC0417MA	Left end		\$1,020	\$1,056	\$1,008	\$1,068	-	-	-

## Escalas

Manufacturer: Inclass, Spain

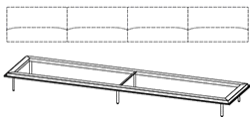
Product Code	Base	Description	Price	G2/COM	G3	G4	G5	G6	G7	G10
--------------	------	-------------	-------	--------	----	----	----	----	----	-----

Structural frame with legs 360x80cm.



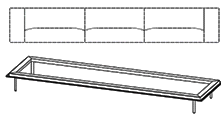
ESC0045	Colours M1		\$3,765	-	-	-	-	-	-	-
ESC0045	Colours M2		\$4,143	-	-	-	-	-	-	-

Structural frame with legs 320x80cm



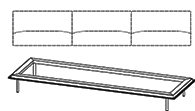
ESC0040	Colours M1		\$3,540	-	-	-	-	-	-	-
ESC0040	Colours M2		\$3,894	-	-	-	-	-	-	-

Structural frame with legs 280x80cm



ESC0035	Colours M1		\$2,973	-	-	-	-	-	-	-
ESC0035	Colours M2		\$3,270	-	-	-	-	-	-	-

Structural frame with legs 240x80cm



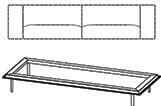
ESC0030	Colours M1		\$2,682	-	-	-	-	-	-	-
ESC0030	Colours M2		\$2,949	-	-	-	-	-	-	-

## Escalas

Manufacturer: Inclass, Spain

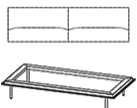
Product Code	Base	Description	Price	G2/COM	G3	G4	G5	G6	G7	G10
--------------	------	-------------	-------	--------	----	----	----	----	----	-----

Structural frame with legs 200x80cm



ESC0025		Colours M1	\$2,475	-	-	-	-	-	-	-
ESC0025		Colours M2	\$2,724	-	-	-	-	-	-	-

Structural frame with legs 160x80cm



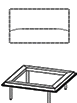
ESC0020		Colours M1	\$2,151	-	-	-	-	-	-	-
ESC0020		Colours M2	\$2,367	-	-	-	-	-	-	-

Structural frame with legs 120x80cm



ESC0015		Colours M1	\$1,860	-	-	-	-	-	-	-
ESC0015		Colours M2	\$2,046	-	-	-	-	-	-	-

Structural frame with legs 80x80cm



ESC0010		Colours M1	\$1,560	-	-	-	-	-	-	-
ESC0010		Colours M2	\$1,716	-	-	-	-	-	-	-

## Escalas

Manufacturer: Inclass, Spain

Product Code	Base	Description	Price	G2/COM	G3	G4	G5	G6	G7	G10
--------------	------	-------------	-------	--------	----	----	----	----	----	-----



Single armchair W.80cm with high arms

COM: 410 cm - 4.5 yds

ESC0610	Colours M1			\$4,656	\$4,914	\$5,124	\$5,748	\$6,267	\$6,789	\$6,294
ESC0610	Colours M2			\$4,788	\$5,046	\$5,256	\$5,880	\$6,399	\$6,921	\$6,426



Single armchair W.80cm with low arms

COM: 310 cm - 3.4 yds

ESC0600	Colours M1			\$4,587	\$4,848	\$5,055	\$5,682	\$6,201	\$6,723	\$6,228
ESC0600	Colours M2			\$4,719	\$4,980	\$5,187	\$5,814	\$6,333	\$6,855	\$6,360

Low table 80x80cm with wooden top and 4 steel rod legs.



		Oak Natural/Stained	Walnut Natural	Lacquered MDF Colours W1	Lacquered MDF Colours W2
ESC0640	Colours M1	\$2,496	\$2,532	\$2,484	\$2,544
ESC0640	Colours M2	\$2,628	\$2,664	\$2,616	\$2,676



Optional set of 4 or 6 Oak legs for sofa.

ESC0500MA	Set of 4 wooden legs	\$291	-	-	-	-	-	-	-
ESC0510MA	Set of 6 wooden legs	\$432	-	-	-	-	-	-	-

## Escalas

Manufacturer: Inclass, Spain

Product Code	Base	Description	Price	G2/COM	G3	G4	G5	G6	G7	G10
--------------	------	-------------	-------	--------	----	----	----	----	----	-----



Quilted upholstery

ESC0580TA	Seat 80cm with backrest	\$201	-	-	-	-	-	-	-	-
ESC0584TA	Seat 80cm	\$156	-	-	-	-	-	-	-	-
ESC0586TA	Seat 40cm	\$123	-	-	-	-	-	-	-	-
ESC0588TA	Seat 80cm with high backrest	\$249	-	-	-	-	-	-	-	-



Horizontal stitching upholstery

ESC0590TA	Seat 80cm with backrest	\$183	-	-	-	-	-	-	-	-
ESC0594TA	Seat 80cm	\$138	-	-	-	-	-	-	-	-
ESC0596TA	Seat 40cm	\$117	-	-	-	-	-	-	-	-
ESC0598TA	Seat 80cm with high backrest	\$225	-	-	-	-	-	-	-	-



Upholstered privacy screen designed to be assembled into the sofa frames.

ESC0806PD	Width 60cm	\$948	\$1,062	\$1,155	\$1,431	\$1,659	\$1,890	-
ESC0806PI	Width 60cm	\$948	\$762	\$1,155	\$1,431	\$1,659	\$1,890	-
ESC0808PD	Width 80cm	\$1,011	\$1,146	\$1,254	\$1,578	\$1,851	\$2,121	-
ESC0808PI	Width 80cm	\$1,011	\$1,146	\$1,254	\$1,578	\$1,851	\$2,121	-
ESC0808PT	Width 80cm	\$1,011	\$1,146	\$1,254	\$1,578	\$1,851	\$2,121	-
ESC0812PT	Width 120cm	\$1,149	\$1,329	\$1,470	\$1,896	\$2,253	\$2,607	-
ESC0816PT	Width 160cm	\$1,461	\$1,686	\$1,866	\$2,409	\$2,862	\$3,312	-
ESC0818PT	Width 180 cm	\$1,644	\$1,914	\$2,130	\$2,775	\$3,315	\$3,855	-
ESC0820PT	Width 200 cm	\$1,971	\$2,265	\$2,499	\$3,207	\$3,795	\$4,383	-
ESC0824PT	Width 240cm	\$2,397	\$2,760	\$3,051	\$3,921	\$4,647	\$5,373	-



## Escalas

Manufacturer: Inclass, Spain

Product Code	Base	Description	Price	G2/COM	G3	G4	G5	G6	G7
--------------	------	-------------	-------	--------	----	----	----	----	----



Upholstered privacy screen designed to be assembled into the sofa frames.

ESC0828PT	Width 280cm		\$2,739	\$3,159	\$3,495	\$4,503	\$5,343	\$6,183	
-----------	-------------	--	---------	---------	---------	---------	---------	---------	--



Plastic cable grommet with cover Ø80mm  
(Available in black or white)

ELC0010			\$90						
---------	--	--	------	--	--	--	--	--	--



Brushed aluminum grommet with cover Ø80mm

ELC0020EL			\$201						
-----------	--	--	-------	--	--	--	--	--	--



Wireless induction charger Ø80mm (Output: 2m cable USB-A)

ELC0030EL			\$651						
-----------	--	--	-------	--	--	--	--	--	--



USB charger with 2 ports Ø30mm (Output: 1,5m cable + Schucko transformer)

ELC0040EL			\$375						
-----------	--	--	-------	--	--	--	--	--	--

## Escalas

Manufacturer: Inclass, Spain

Product Code	Description	Price
--------------	-------------	-------



SECLUSION G2 UNDERMOUNT POWER UNIT - Mounts under Seat with two wood screws.

SEC-2U-B-9	Contains Double USB, 2 Outlets, 9/ Court. Black or White	\$567
------------	--	-------

COM Orders are subject to following charges per Manufacturer: \$18 per yard (any fabric): Minimum: \$200.

COM Requirements for UPHOLSTERED PANELS:

- ESC0806: 150 cm - 7.1 yds
- ESC0808: 195 cm - 2.2 yds
- ESC0812: 280 cm - 3.1 yds
- ESC0816: 370 cm - 4.1 yds
- ESC0818: 415 cm - 4.6 yds
- ESC0820: 460 cm - 5.1 yds
- ESC0824: 545 cm - 6.0 yds
- ESC0828: 620 cm - 6.8 yds



**Tusch Seating International Inc.**  
 251 Bartley Dr. Unit #4  
 Toronto, ON M4A 2N7 Canada  
 www.tuschseating.com

T 416.368.6100  
 F 416.368.4477  
 T 888.368.6101  
 info@tuschseating.com