

VARYA **Stools**

design – **Simon Pengelly**



INCLASS

TS Tusch
Seating
International

Designed by Simon Pengelly, the **VARYA** collection has its origins in the quest for a universal, elegant and essential chair that easily bridges the boundary between public and domestic spaces. The collection is generated by combining comfortable seats with different metallic or wooden bases.

Conçue par Simon Pengelly, la collection **VARYA** trouve ses origines dans la recherche d'une chaise universelle, élégante et essentielle à même d'effacer la limite entre les espaces publics et domestiques. La collection est créée en combinant des assises confortables avec différents piètements en métal ou en bois.

VARYA

en – The **VARYA** collection comprises an extensive range of chairs, armchairs, stools and benches. The thermoplastic seat shell is available in twelve colours or upholstered in three different styles. The collection is generated by combining comfortable seats and different metallic or wooden bases.

The broad variety of bases, together with the extensive range of available finishes, allows for endless customisation possibilities without altering the unique character and timeless spirit of these original chairs designed for inhabiting diverse settings and contexts in spaces for collective use, workspaces or private residences.



INCLASS

VARYA

fr — La collection **VARYA** se compose d'une vaste gamme de chaises, fauteuils, tabourets et bancs. La coque est disponible en thermopolymère en douze couleurs et également tapissée dans trois façons différentes. La collection est créée en combinant des sièges confortables avec différents piètements en métal ou en bois.

La grande variété de piètements, ainsi que la large gamme de finitions disponibles, permettent des possibilités infinies de personnalisation sans altérer le caractère unique et l'esprit intemporel de ces chaises originales conçues pour habiter des environnements et des contextes divers dans des espaces pour usage collectif, travail ou résidences privées.



INCLASS

VARYA



INCLASS

VARYA



en – VARYA chairs and stools are also available with oak legs which brings warmth and elegance to any space.

fr – Les chaises et les tabourets VARYA sont également disponibles avec piètement en bois de chêne. L'utilisation du bois naturel apporte chaleur et élégance.

VARYA



INCLASS

en – Refined, elegant and functional, VARYA stools can inhabit countless spaces, whether for public or residential use.

The stools are available with four different base types and two heights.

fr – Raffinés, élégants et fonctionnels, les tabourets VARYA peuvent habiter une multitude d'espaces à la fois publics et résidentiels.

Les tabourets sont fabriqués avec quatre types de piètements et en deux hauteurs.





VARYA



INCLASS

VARYA



INCLASS

VARYA

The collection



Four leg stool - High & Medium



Sled base stool - High & Medium



Pedestal base stool - High & Medium



Wooden leg stool - High & Medium

INCLASS

VARYA

Plastic Colours



G42
NCS 3502-R



P70
NCS 3020-Y80R



O25
NCS 3060-Y60R



Y62
NCS 2060-Y10R



M82
NCS 3005-Y50R



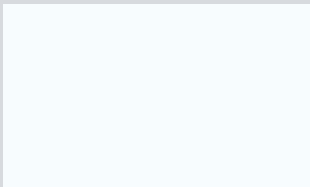
M56
NCS 7005-Y80R



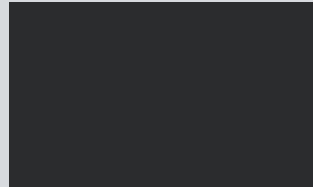
V16
NCS 3010-G20Y



B40
NCS 6020-B10G



W01
RAL 9010



B00
NCS 8500N

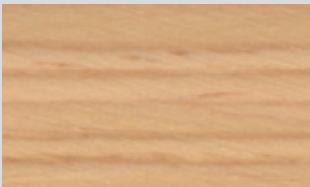


B44
NCS 4010-R90B

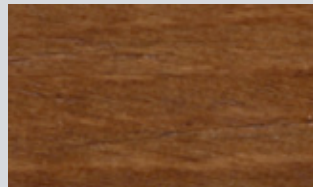


B36
NCS 6020-R80B

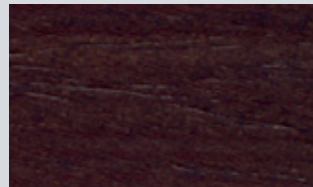
Oak Base



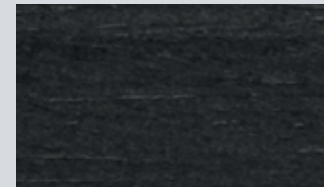
Natural



Walnut stain



Wenge stain



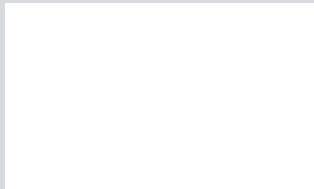
Black stain

INCLASS

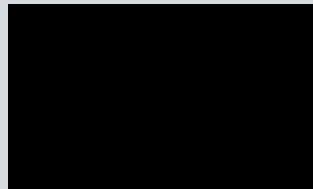
VARYA

Metal Frame

STANDARD COLOURS



White



Black



Aluminum

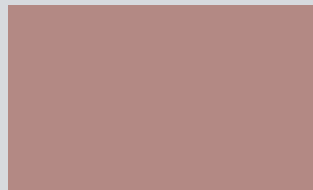


Chrome

OPTIONAL COLOURS



Light grey



Rose



Clay orange



Mustard



Stone



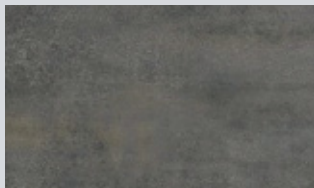
Coffee brown



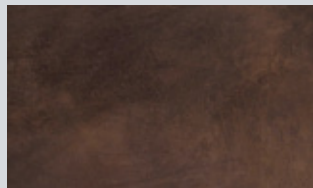
Turquoise green



Marine green



Rust grey



Rust brown



Sky blue



Navy blue

Upholstery

VARYA chairs can be upholstered in all the fabrics & leathers from the INCLASS sample book or in fabrics specified or supplied by the customer.

INCLASS

ECOLOGY AND THE ENVIRONMENT

VARYA chairs have been designed and are manufactured according to environmental criteria. The result is a seating collection that, as well as being highly versatile and functional, is ecological and environmentally friendly.

Easy to dismantle at the end of their service life

VARYA chairs have been designed for easy dismantling at the end of their service life. Their various materials can thus be easily separated and recycled.

Polypropylene is an eco-friendly material

Approximately 50% of the average weight of VARYA chairs is recyclable polypropylene. This thermoplastic features a series of properties that are difficult to find in other materials, such as: physical, thermal and chemical resistance, absence of toxic substances, plus it is one of the most environmentally-friendly materials because it is 100% recyclable.

The steel structures

The steel structures account for approximately 45% of the average weight of VARYA chairs. They are produced in Spain from quality steel. Steel is a 100% recyclable material. The surface is coated with solvent-free and VOC-free powder paint.

The aluminium bases

The swivel bases of VARYA chairs are made from aluminium. Aluminium is a highly environmentally-friendly metal and is therefore called the eco-friendly metal. Among other advantages, aluminium is 100% and infinitely recyclable.

The wooden parts

In the manufacture of the wooden components, INCLASS uses European wood only, harvested from sustainably managed forests.

Textiles

The vast majority of textiles used by INCLASS carry the EU ECOLABEL and other similar ones, a guarantee that the product is environmentally friendly.

Durability and timelessness

“The best way to protect the environment is to not generate waste.”

The resilience of VARYA chairs has been tested by the Furniture Technology Institute against the most stringent international regulations. The chair design is timeless and impervious to passing fads, ensuring a long service life and preventing the generation of unnecessary waste.

100% European manufacture

The VARYA collection is manufactured by INCLASS in Spain in compliance with the ISO 9001 quality standards and ISO 14001 environmental standards.